

# NIMH - TECHNICAL DATA SHEET - MODEL ESP10000DH

TECHNICAL DATA SHEET

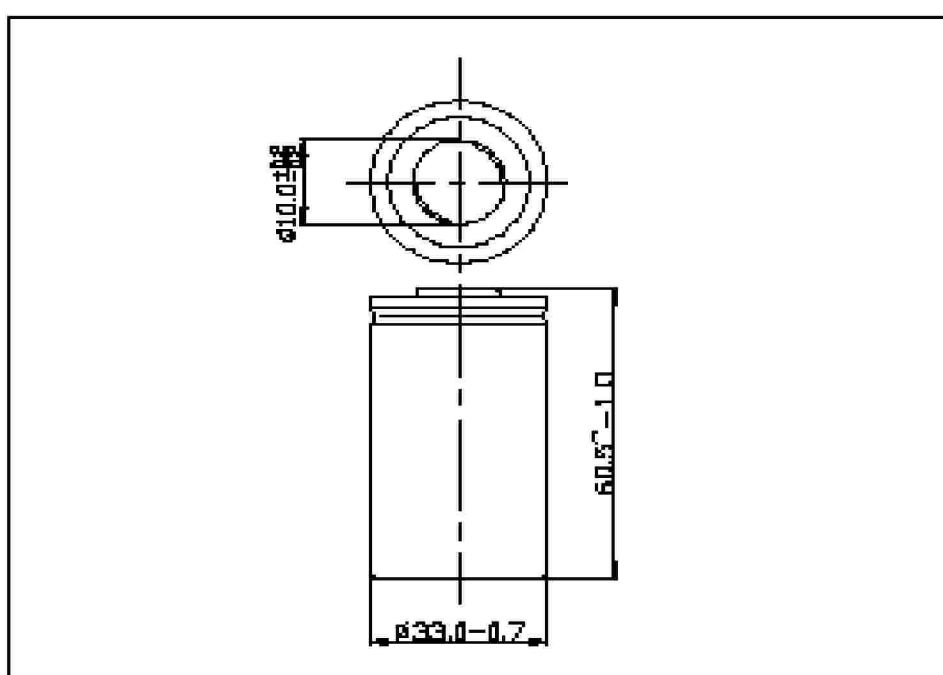
**Battery General Specification :**  
**Model** - ESP10000DH  
**Chemical Material** - Nickel Metal Hydride.  
**Description** - 1.2v Rechargeable battery  
 D size 10000mAh



## Physical and Electrical Specifications.

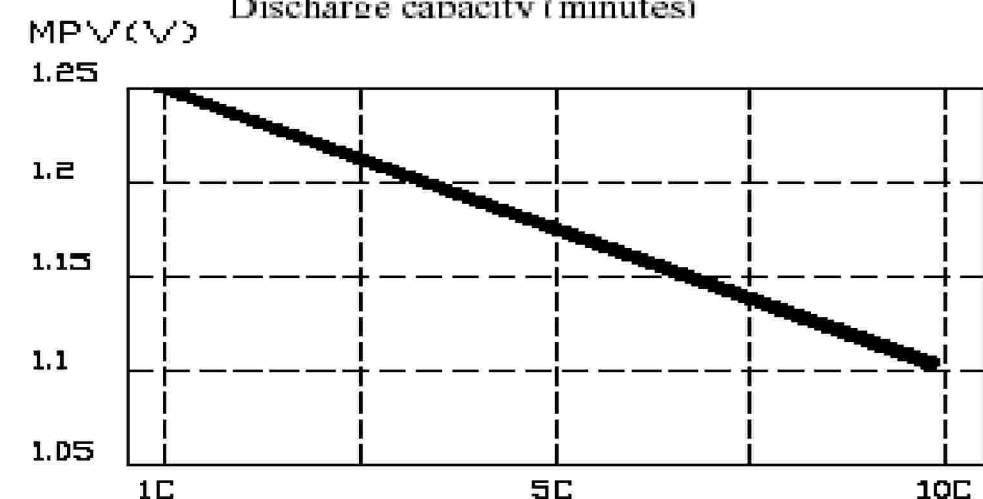
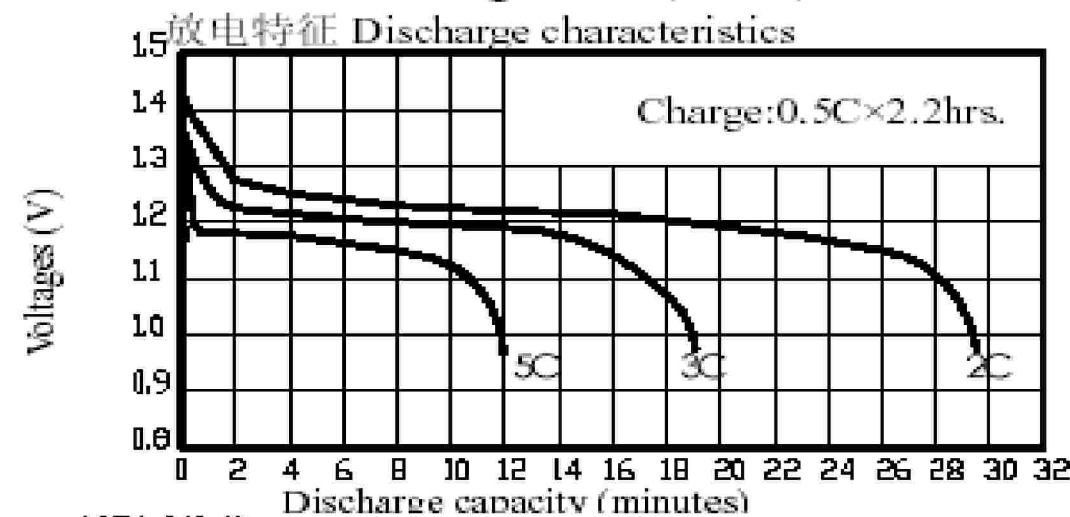
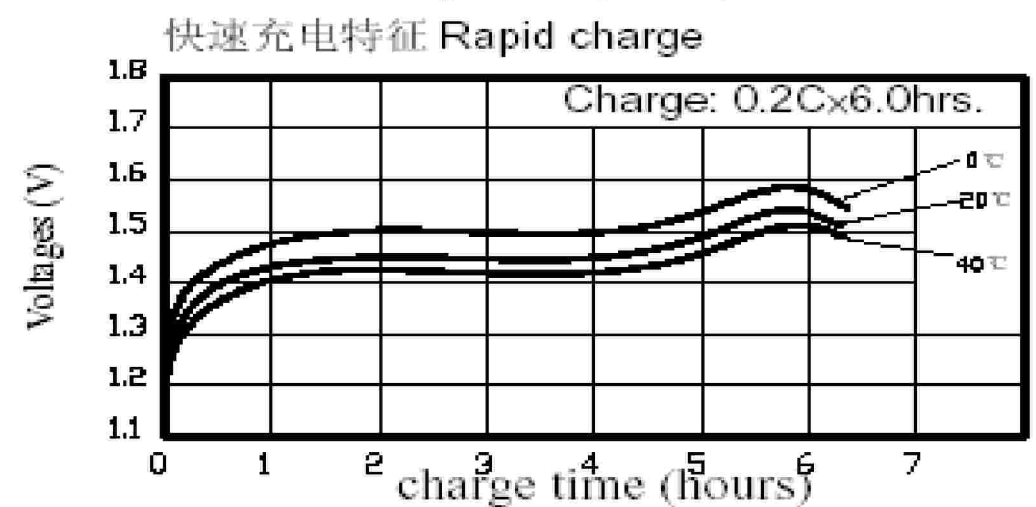
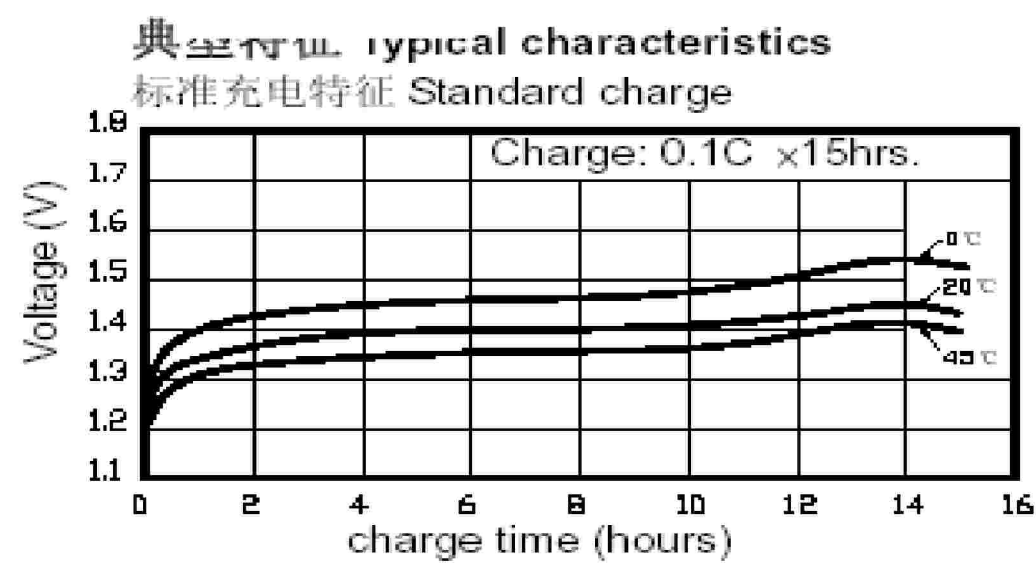
标称电压 Nominal voltage		1.2V	
容量 Capacity		0.2C 放电 Discharge	30A 放电 Discharge
	最小 Minimum	285min	17.5min
	典型 Typical	300min	19.0min
尺寸 Dimensions	直径 Diameter	mm 33.0 <sup>+0.7</sup>	
	高 Height	60.5 <sup>+1.0</sup>	
大约重量 Weight(Approximately)		克 gram 167	
电阻 Internal Impedance At 1000 Hz		5mΩ(Max) (充电后 After Charge)	
充电 Charge	标准 Standard	1000mA(0.1C)x15hrs	
	快速 Rapid	2000mA(0.2C)x6.0hrs	
环境温度 Ambient temperature	充电 Charge	标准 standard	0°C to 45°C
		快速 Rapid	0°C to 40°C
	放电 Discharge	-20°C to 50°C	
	贮藏 Storage	-20°C to 40°C	

单颗电池尺寸包括 PVC (Dimensions with tube)

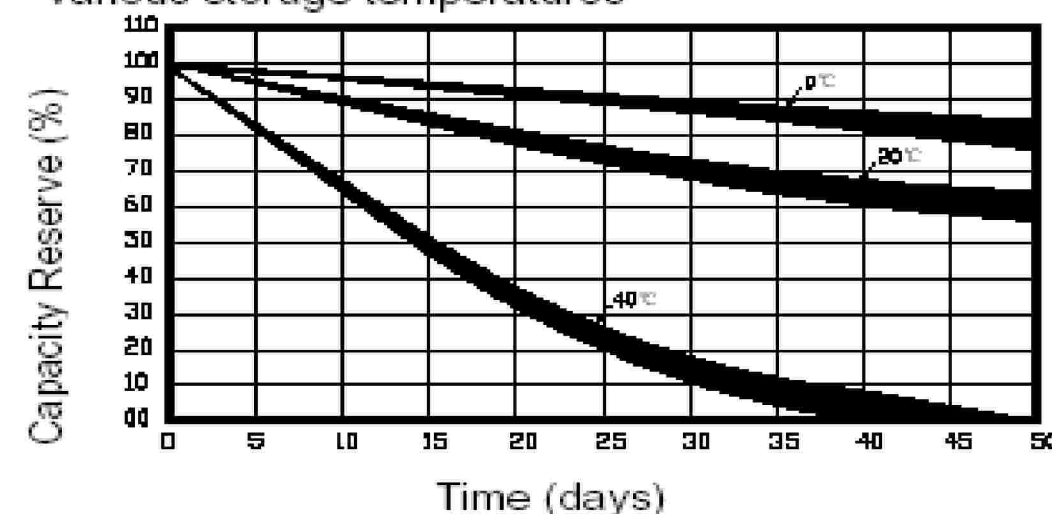


备注 Note:

- 标称容量是指 20°C 时 0.2C 放电容量  
Nominal capacity, rated at 0.2C 20°C.
- 容量只作为参考  
Average capacity, for reference only.
- 重量和内阻也作为参考  
Weight and internal impedance are For reference.
- 寿命测试依照 IEC 标准  
Standard according as IEC of test cycle life.



Ni-MH 圆柱型电池在不同的温度荷电保持曲线图  
Charge retention curves of Ni-MH cylindrical cell At various storage temperatures



**CELLS MANUFACTURED TO GB/T19001:2000 - ISO9000/9001: 2000 STANDARD & CONFORMITY**  
 Cell & Battery specifications are subject to modifications without prior notice. All the above information is generally descriptive and is not intended as a guarantee or warranty.

**ESP SPECIAL BATTERIES LTD**  
 21A Spencefield Lane, 565 Uppingham Rd  
 Leicester. LE5 6PT Leicester. LE5 6QA  
 England. England.

Tel 0116 2413796  
 Fax 0116 2416519  
 Email - info@espspecialbatteries.co.uk  
 www.espspecialbatteries.co.uk

ESP10000DH