

NICAD - TECHNICAL DATA SHEET - MODEL ESP1600SCHT

TECHNICAL DATA SHEET

Battery General Specification :

- Model** - ESP1600SCHT
Chemical Material - Nickel Cadmium.
Description - 1.2v Rechargeable battery
 Sub C size High Temperature



Discharging:

(A) Discharge current.

- 1/ Discharged at 0.2CA, Provide 80% at EPV 1.2V 98% of nominal capacity at EPV 1.1V.
- 2/ Discharged at 0.5CA, Provide 70% at EPV 1.2V 95% of nominal capacity at EPV 1.1V.
- 3/ Discharged at 1CA, Provide 60% at EPV 1.2V 93% of nominal capacity at EPV 1.1V.
- 4/ Discharged continuously at 1C, for 2 hours, No explosion or leakage.

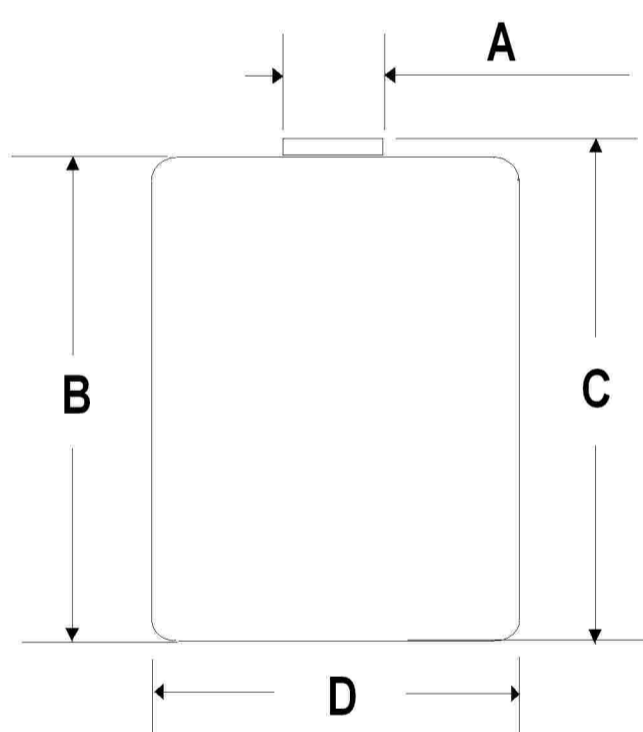
(B) Capacity and Cycle (500 to 800 cycles)

Charge at 0.1C, discharge at 0.2C; 100% nominal capacity.

Charge at 1C, discharge at 1C; minimum 95% nominal capacity.

Physical and Electrical Specifications.

DIMENSIONS WITH SLEEVE



A 09.1mm +/- 0.2mm

B

C 42.0mm +/- 0.5mm

D 22.3mm +/- 0.2mm

Nominal Voltage		1.2v	
Nominal Capacity		1600mAh	
Weight		49g	
Internal resistance.		8m Ω	
Charge	Trickle	80mA x 48hrs	
	Standard	160mA x 15hrs	
	Quick	480mA x 5hrs	
Discharge	160mA (0.1C)	64min	
	320mA (0.2C)	60min	
	1600mA (1C)	55min	
Ambient temperature	Charge	Trickle & Standard	0 ⁰ to 70 ⁰ C
		Quick	0 ⁰ to 45 ⁰ C
	Discharge		-20 ⁰ to 70 ⁰ C
	Storage		-20 ⁰ to 70 ⁰ C

Discharge Temperature at 0.2CA

- 1/ At 20⁰C, 100% nominal capacity.
- 2/ At 0⁰C, 90% nominal capacity.
- 3/ At 70⁰C, Or -20⁰C, 85% nominal capacity.
- 4/ Charge retention for 30 days at 20⁰C, cell can provide 70% nominal capacity discharged at 0.2CA.

CELLS MANUFACTURED TO GB/T19001:2000 - ISO9000/9001: 2000 STANDARD & CONFORMITY

Cell & Battery specifications are subject to modifications without prior notice. All the above information is generally discriptive and is not intended as a guarantee or warranty.

ESP1600SCHT